



Series 150

Motogard

Installation Instructions

CONNECTIONS

Power Connections:

Connect 120/240 VAC to input terminals 1 and 2.

Sensor Connections:

1. Connect one lead of each thermistor to Terminal 3.
2. Connect other lead of each Thermistors **in series** through to Terminal 4.
3. Maximum number of Thermistors in **series**: Three (3)

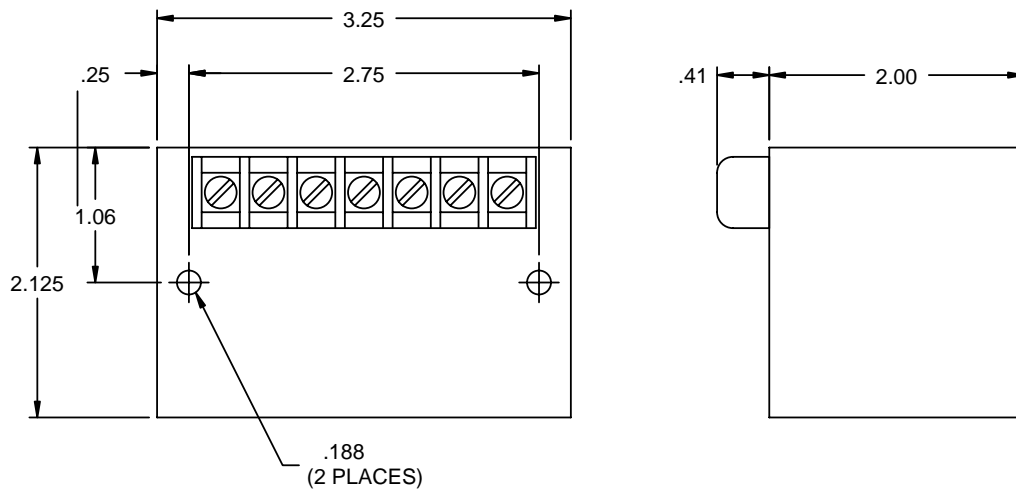
Output Load Connections:

1. Terminals 5, 6 and 7 comprise a set of “form C” contacts with terminal 6 common. Terminal 5 is the open side. Terminal 7 is the closed side.
2. Be sure power is never applied directly across contacts but always in series with a load.
3. Maximum allowable load - **5 amps at 115 VAC**
4. The closed output of the Motogard Over Temperature Protection System has been specifically designed to operate directly in series with most main line contactors. If a small interposing relay must be used, the sealed burden should be greater than 10VA.
5. The open output of the Series “150” controller can be used for trip indication.

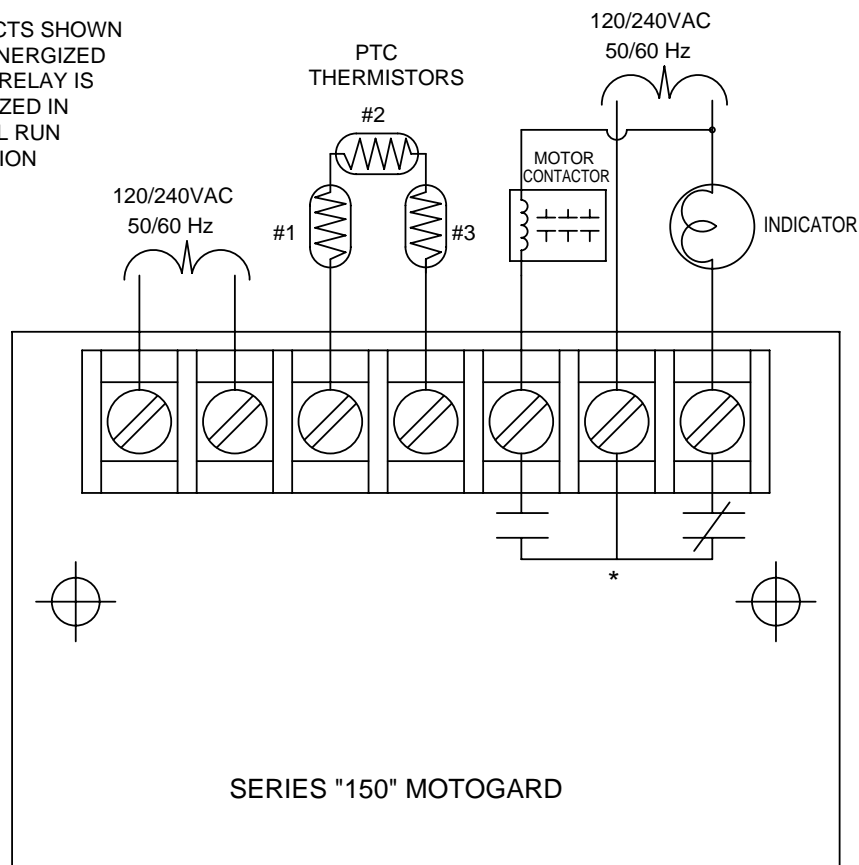
See opposite side for possible wiring option.

Series "150" Motogard

Three (3) Thermistors in parallel



* CONTACTS SHOWN
IN DE-ENERGIZED
STATE, RELAY IS
ENERGIZED IN
NORMAL RUN
CONDITION



AMETEK
AUTOMATION & PROCESS TECHNOLOGIES

1080 N. Crooks Road • Clawson, MI 48017
800-635-0289 • 248-435-0700 • Fax 248-435-8120
www.ametekapt.com • www.ametek.com

931
150.IIR1
01/02.Z92
5C